

Bed Bug Detection Guide



**SHELDON
NOSE**

who you will be
sleeping with tonight !!



Egg
(1 mm long)



First Stage Larva
(1.5 mm long)
Takes blood meal then molts.



Second Stage Larva
(2 mm long)
Takes a blood meal then molts.



Third Stage Larva
(2.5 mm long)
Takes a blood meal then molts.



Fourth Stage Larva
(3 mm long)
Takes a blood meal then molts.



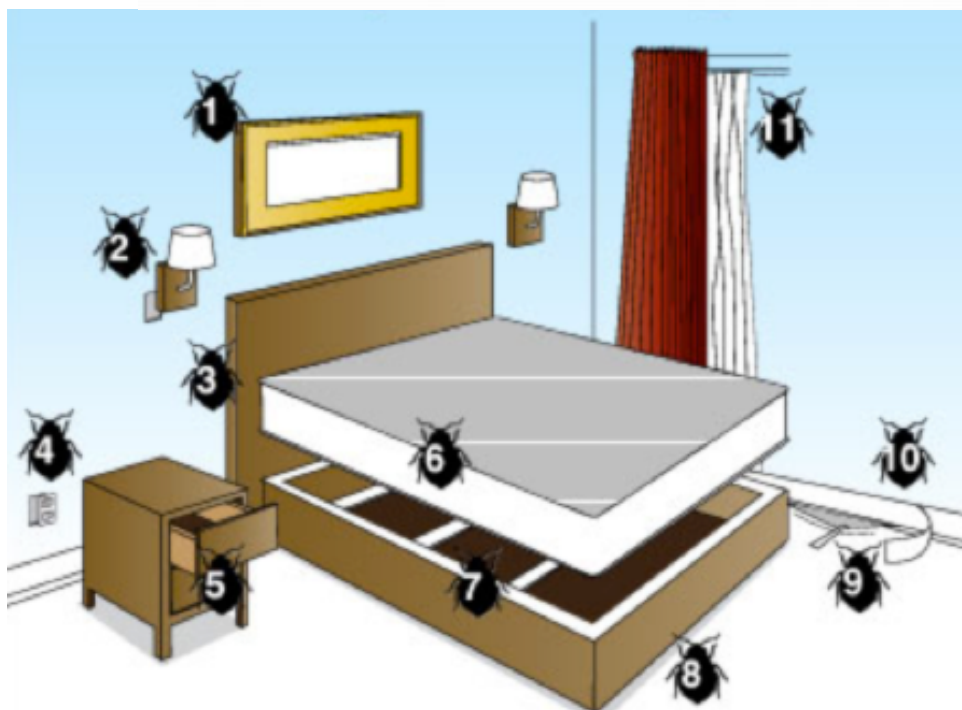
Fifth Stage Larva
(4.5 mm long)
Takes a blood meal then molts.



Adult
(5.5 mm long)
Takes repeated blood meals over several weeks.



Adult Female
(6.5 mm long)
Females lay up to 5 eggs per day, continuously.



1. Behind artwork & mirrors
2. Behind fixtures
3. Behind headboards
4. Around and behind outlets
5. Inside and underneath nightstands
6. Mattresses
7. Along and beneath box springs
8. Along baseboards and carpet
9. Drapersies and soft furnishing's

Bites

Bed bug bites can resemble many other insect bites.



AA Cleaning & Maintenance
Unit A 276 Gore Street W
Thunder Bay
P7E 3R4

Please Visit
Call/Email

www.aacleaningmaintenance.ca
807-475-0201/ fax 807-577-3339
sheldonknowsbugs@gmail.com

